



24 MONTH PM KIT

MKH2F-24M



Instructions for:

24 Month PM Kit MKH2F-24M

Instructions

Re-filling the Water reservoir:

Remove the upper service panel and the water reservoir cap. Fill the water reservoir to the "FULL" mark using de-ionized water **(A)**. The generator will provide an audible and visual indication that the water is full by beeping twice and displaying "WATER FULL" in the display. Refit the water reservoir cap and upper service panel.

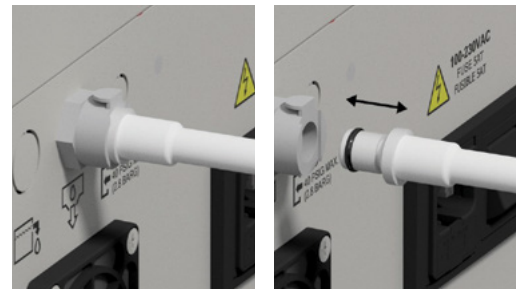
NOTE: If the water has been changed due to high conductivity, the de-ionizer cartridge must also be changed.



A

Draining the Water reservoir:

Locate the drain port on the rear of the generator and insert the drain line **(B)**. Allow the water reservoir to drain completely into a suitable container. Once the water reservoir is drained, remove the drain line by pressing the lock downwards and removing the line **(C)**.



B



C

WARNING

Do not re-use the old water.

Replacing the De-ionizer Cartridge:

WARNING

Care should be taken to avoid contamination from handling.

Switch the generator into Standby mode and remove the upper service panel and the water reservoir cap. Remove the de-ionizer cartridge **(D)** and fit the replacement cartridge. Refit the water reservoir cap and upper service panel.



D

Replacing the Water Filter:

Switch the generator into Standby mode, remove the upper service panel and the water reservoir cap and drain the water reservoir. Remove the de-ionizer cartridge and store in a clean area for re-use later.

WARNING

Always change the deionizer cartridge if the generator was indicating bad conductivity levels prior to starting this procedure or if it has become contaminated in any way.

Instructions for:

24 Month PM Kit MKH2F-24M

The water filter is removed from the water reservoir using the tool supplied in the Filter Service kit. Push the tool over the filter so that the ridges on the filter fit into the slots on the tool. Rotate the tool counter clockwise, lift the filter out of the water reservoir **(E)** and discard. Fit the replacement filter onto the tool, place it into the water reservoir and turn clockwise until the filter is fully located in to the recess at the bottom of the water reservoir. Refit the de-ionizer cartridge, fill the water reservoir, and refit the water reservoir cap and upper service panel.

After replacing Filter , go to menu => Service and Calibration => use pass code 14725 => Reset Filter Service Timer



E

Replacing the Desiccant Cartridge:

WARNING

Ensure that the generator is fully de-pressurized before continuing with this procedure.

Switch the generator off and disconnect the electrical supply. Ensure that the generator is fully depressurized by removing the outlet fitting on the rear.

Remove the upper service panel. Break the seal of the cartridge using a 19mm wrench **(F)** and then unscrew by hand counter clockwise.

Remove the cartridge and fit the replacement **(G)**. The new cartridge should be tightened by hand. An additional 1/8 th turn, from hand tight, should be applied using a 19mm wrench. Refit the upper service panel and the outlet fitting.

Restart the generator and initiate a self test as described in sub-section 4.3.6 of the generator user guide.

After replacing Desiccant, go to menu => Service and Calibration => use pass code 14725 => Reset Desiccant Flow



F



G

Replacing the Environmental Filters

Locate the two vents on the rear of the generator **(H)**. Push the outside of the gland upwards **(I)** to release the filters and remove. Fit the New Environmental Filters as supplied in the Filter Service Kit.

NOTE: Environmental filters should be changed every six months as there is no visual indication of exhausted filters.



H



I

Instructions for:

24 Month PM Kit MKH2F-24M

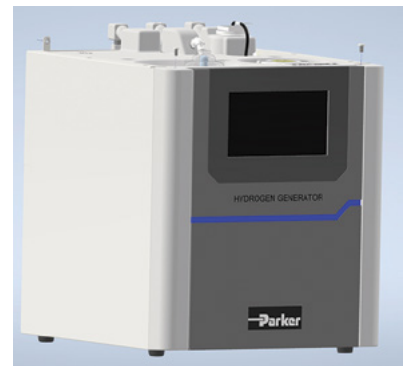
Replacing the Water Pump

Remove upper panel by removing 2 Button Head screws using 1/8" Hex key in view **(J)**, slide panel back than pull panel up.



J

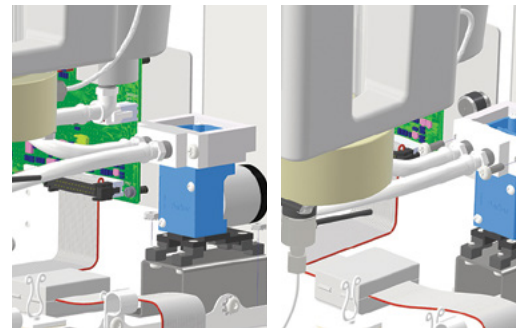
Remove front panel by removing 2 Button Head screws using 1/8" Hex key in view **(K)**, slide panel up than pull panel back and place front panel to the right side of the unit.



K

Install supplied clamps to tubes going in and out the pump the prevent water from leaking when replacing the pump. Place some paper toweling in the bottom of the generator to catch any residual water within the water pump.

Remove 2 nuts in view **(L)** using 5/16" socket, remove 2 Philips screws view **(M)**. disconnect water pump from plate and clamp as shown view **(N)**, remove water pump and disconnect pump cable.



L

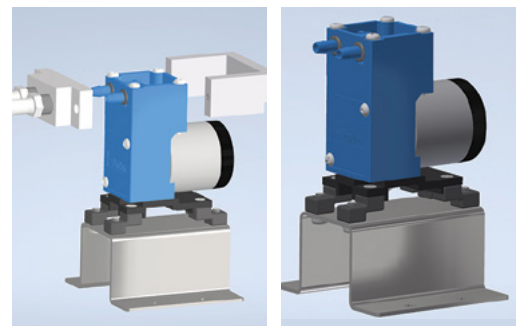
M

Install new water pump, make sure pump inlet outlet O-rings are in place **(O)**

Reassemble the unit following same steps described in reverse.

Re-fill the water reservoir with fresh deionized water. Start the generator and check for leaks before re-fitting the panels.

After replacing Water Pump, go to menu => Service and Calibration => use pass code 14725 => Reset Pump Service Timer.



N

O



Parker Hannifin Corporation
**Industrial Gas Filtration
and Generation Division**
4087 Walden Avenue
Lancaster, NY 14086
phone 800 343 4048
www.parker.com

Supercode Print Reorder Number Date of Issue

Your Local Authorized Parker Distributor

© 2024 Parker Hannifin Corporation

